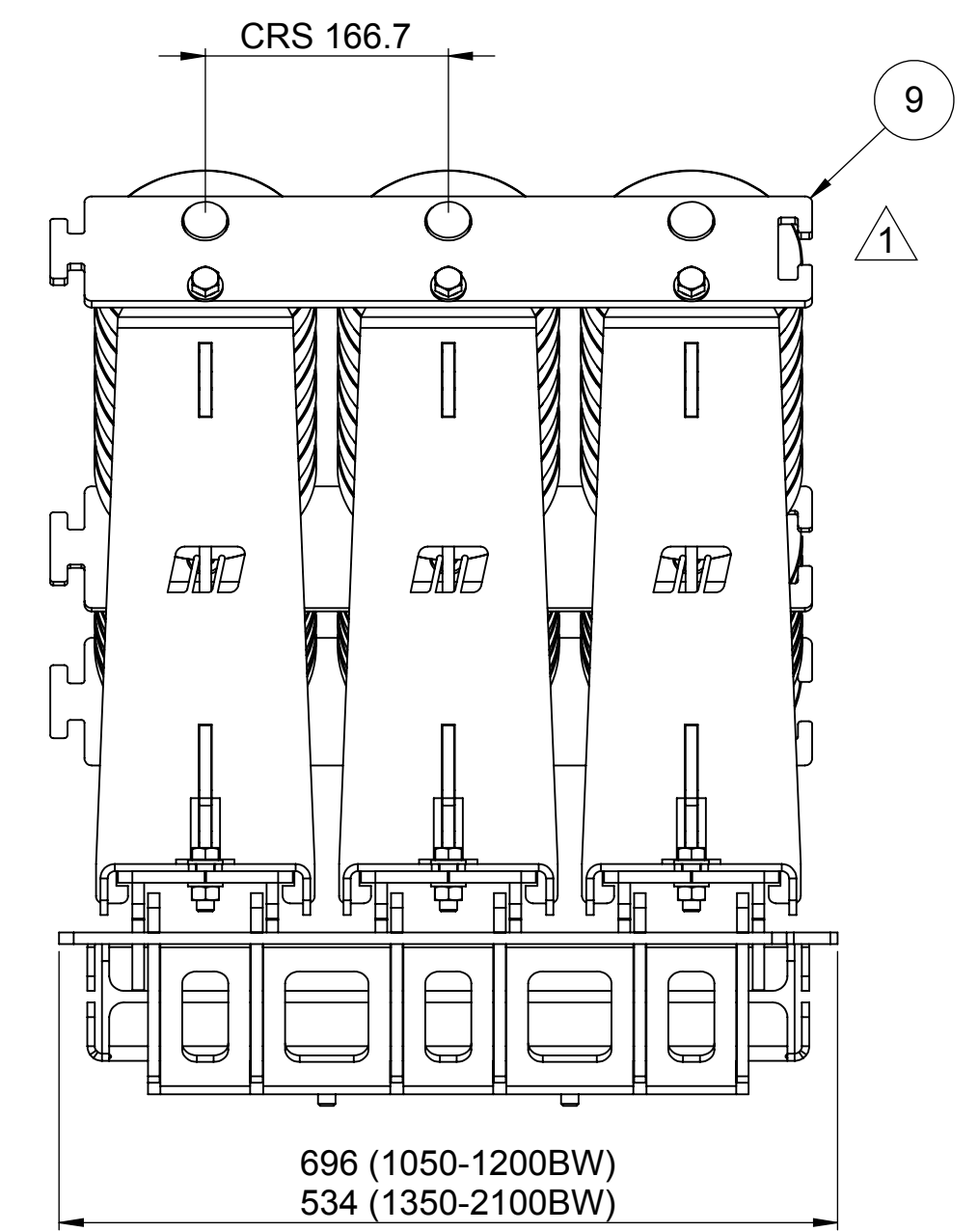
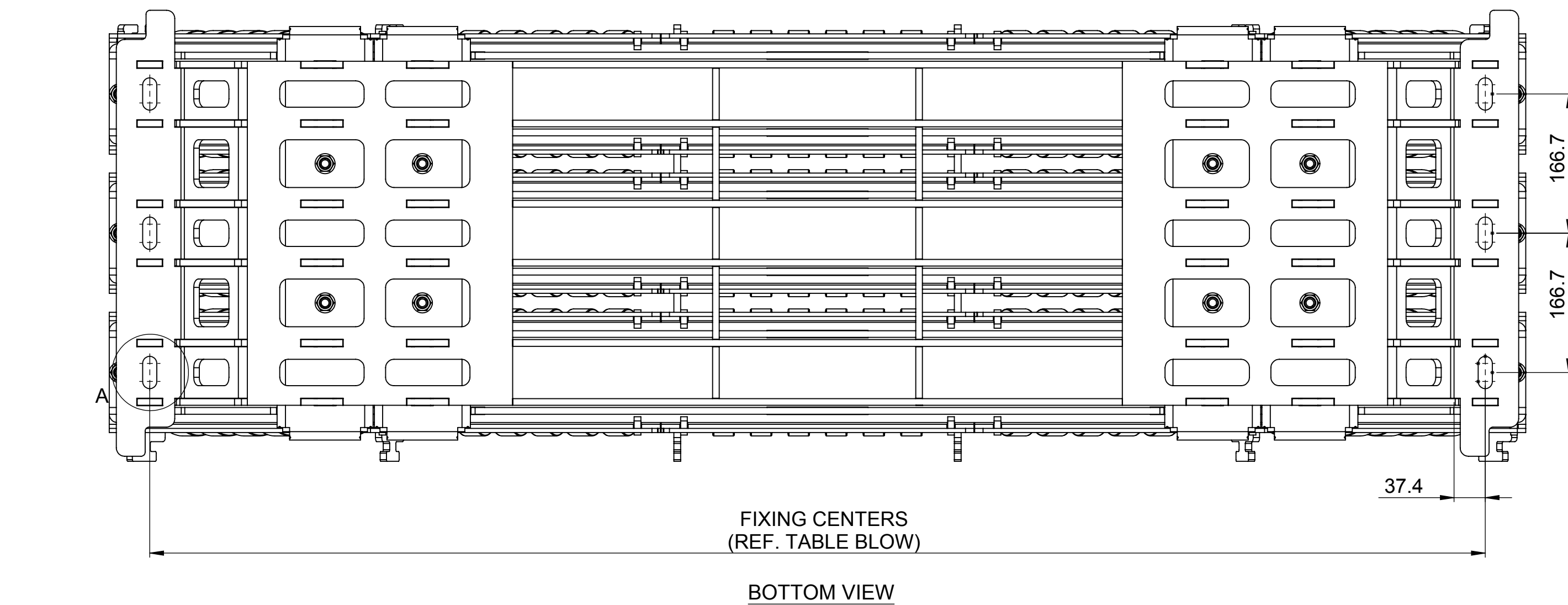
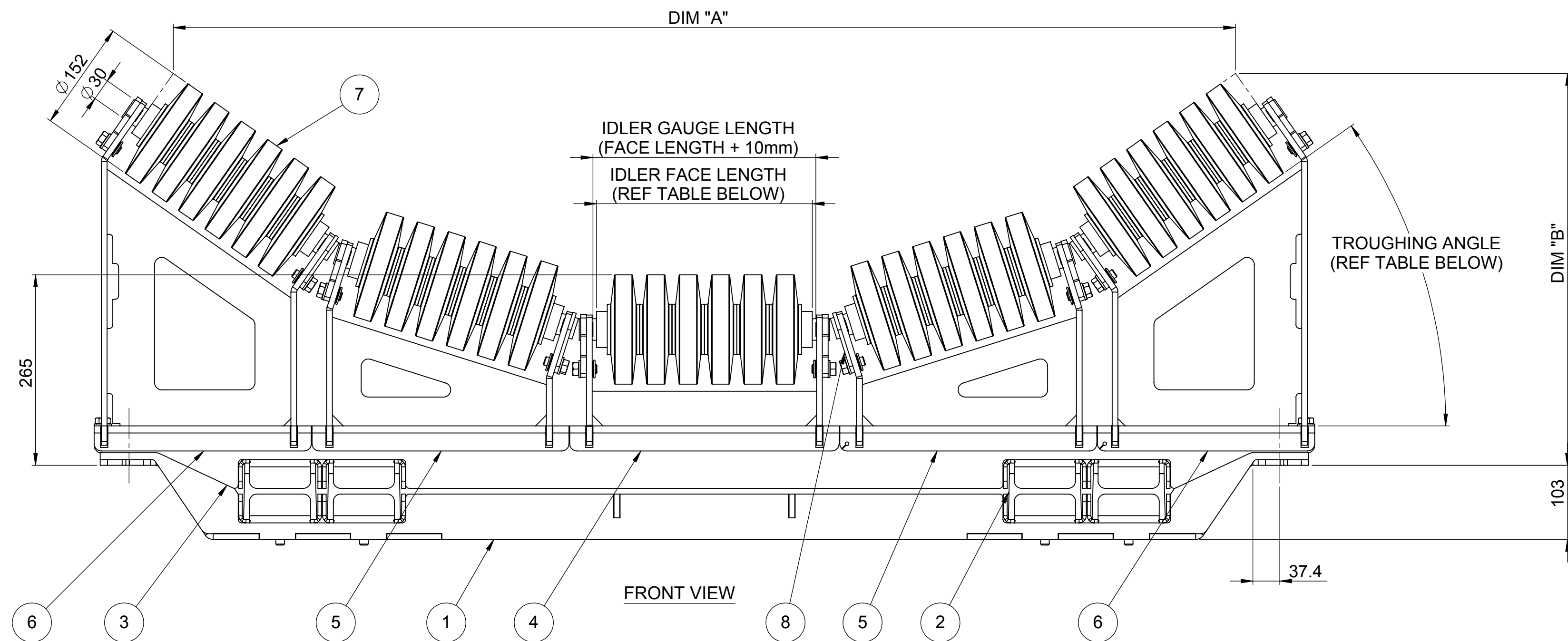


HSRC 5ROLL 1050-2100BW INSTALLATION DRAWING

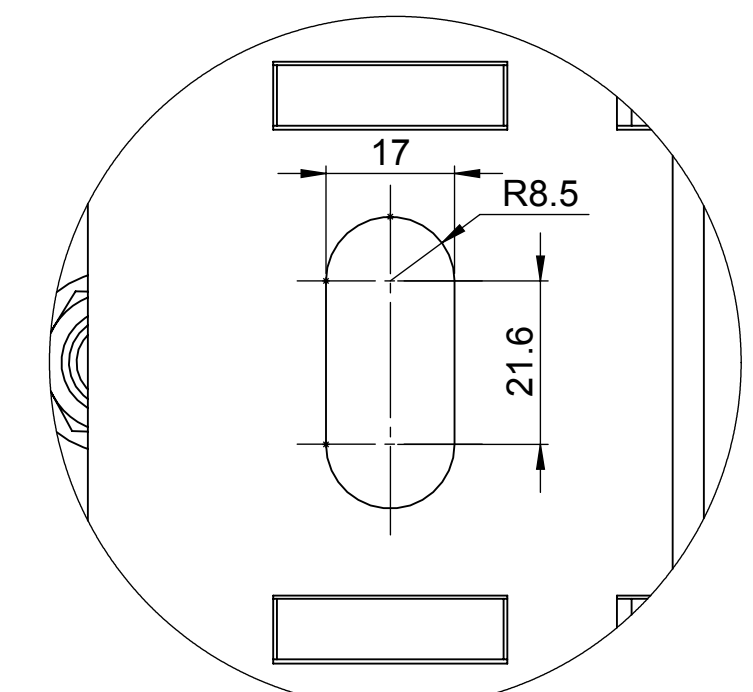
DIM "A"		
BELT WIDTH (mm)	35°	45°
1050	1204	1131
1200	1340	1259
1350	1476	1387
1500	1658	1557
1650	1795	1685
1800	1931	1813
2000	2158	2026
2100	2272	2133

DIM "B"		
BELT WIDTH (mm)	35°	45°
1050	492	549
1200	518	581
1350	545	614
1500	580	658
1650	606	690
1800	632	723
2000	676	777
2100	698	805

BELT WIDTH		FIXING CENTERS	IDLER FACE LENGTH
(mm)	(in)	(mm)	(mm)
1050	42	1296	240
1200	48	1448	270
1350	54	1600	300
1500	60	1752	340
1650	66	1904	370
1800	72	2058	400
2000	80	2260	450
2100	84	2362	475



SIDE VIEW



DETAIL A

NOTE: \* INDICATES SPARE PARTS  
 NOTE: YY INDICATES DEG TROUGH  
 NOTE: XX INDICATES BELT WIDTH IN INCHES

NOTE: \* INDICATES SPARE PARTS

ITEM No.	QTY	COMPONENT DESCRIPTION		PART No.	REFERENCE
1	1	HSRC BASE	HSRC BASE FRAME	HSRC-301-52XX	BASE
2	4	IMPACT BAR	3 ROW IMPACT BAR	31617-475	RUBBER BAR
	2		4 ROW IMPACT BAR	31617-645	RUBBER BAR
3	1	SLEEVE FRAME	FLAT SLIDE FRAME	HSRC-301-52XX-YY51	TOP FRAME
4	3	CENTER SLEEVE	3 ROW CENTER IDLER MOUNT	HSRC-301-52XX-YY52	CENTER NO-TROUGH IDLER
	4		4 ROW CENTER IDLER MOUNT		CENTER NO-TROUGH IDLER
5	6	INNER SLEEVE	3 ROW 35DEG INNER SLEEVE	HRSC-301-52XX-3553	17.5DEG TROUGHING IDLER
			3 ROW 45DEG INNER SLEEVE	HRSC-301-52XX-4553	22.5DEG TROUGHING IDLER
	8		4 ROW 35DEG INNER SLEEVE	HRSC-301-52XX-3553	17.5DEG TROUGHING IDLER
			4 ROW 45DEG INNER SLEEVE	HRSC-301-52XX-4553	22.5DEG TROUGHING IDLER
6	6	OUTER SLEEVE	3 ROW 35DEG OUTER SLEEVE	HSRC-301-52XX-3554	35DEG TROUGHING IDLER
			3 ROW 45DEG OUTER SLEEVE	HSRC-301-52XX-4554	45DEG TROUGHING IDLER
	8		4 ROW 35DEG OUTER SLEEVE	HSRC-301-52XX-3554	35DEG TROUGHING IDLER
			4 ROW 45DEG OUTER SLEEVE	HSRC-301-52XX-4554	45DEG TROUGHING IDLER
7	15	*IDLER	3 ROW 30SERIES 152DIA RUBBER IMPACT IDLER	TMI3-015-2XX5-RR	RUBBER ROLLER
	20		4 ROW 30SERIES 152DIA RUBBER IMPACT IDLER		
8	12	*IDLER LOCK	3 ROW 30SERIES IDLER LOCK	30SERIES IDLER LOCK TEAR	TEAR DROP IDLER LOCK
	16		4 ROW 30SERIES IDLER LOCK	30SERIES IDLER LOCK TEAR	
9	6	*INTERLOCKING IDLER LOCK	3 ROW 30SERIES INTERLOCKING IDLER LOCK	30SERIES IDLER LOCK	INTERLOCK IDLER LOCK
			4 ROW 30SERIES INTERLOCKING IDLER LOCK	30SERIES IDLER LOCK	

NOTE: ROW INDICATES AMOUNT OF 3ROLL SETS.  
 FOR EXAMPLE, THE PRODUCT SHOW IS A 3 ROW HSRC.  
 4ROW HSRC RANGES FROM 1050-1200BW  
 AND 3ROW FROM 1350-2100BW

REV.	DESCRIPTION	DATE	APPROVED
1	INTERLOCKING IDLER LOCK CHANGED TO SINGLE INTERLOCKING BAR	2014-06-05	R. BEER
0	INITIAL RELEASE	2014-03-28	R. BEER

APPROVAL			
SIGN:	F. DE KLERK	SIGN:	S. ENSLIN
DATE:	2014-06-05	DATE:	2014-06-05
MARKETING		PRODUCTION DEPT.	
SIGN:	C. GAKIS	SIGN:	
DATE:	2014-06-05	DATE:	
SALES DEPT.		OTHER	

© COPYRIGHT MARTIN, A DIVISION OF MARTIN BULK HANDLING SOLUTIONS(PTY) LTD., T/A MARTIN ENGINEERING. ALL RIGHTS RESERVED COVERED BY U.S. AND FOREIGN PATENTS PENDING AND ISSUED. ® AND ™ INDICATE TRADEMARKS OF MARTIN ENGINEERING.

PROPERTY OF MARTIN  
 THE INFORMATION CONTAINED WITHIN THIS DRAWING FILE INVOLVES CONFIDENTIAL PROPRIETARY DESIGN RIGHTS OF MARTIN.  
 IT IS SUBMITTED FOR A SPECIFIED PURPOSE AND THE RECIPIENT, BY ACCEPTING THIS DOCUMENT AGREES:  
 1. THAT THIS DOCUMENT WILL NOT BE COPIED OR REPRODUCED IN WHOLE OR IN PART, EXCEPT TO MEET THE PURPOSE FOR WHICH IT WAS DELIVERED, AND  
 2. THAT ANY SPECIAL FEATURES PARTICULAR TO THIS DESIGN WILL NOT BE INCORPORATED IN OTHER PROJECTS AND/OR DESIGNS.  
 3. THAT THIS IS NOT FOR PUBLIC DISTRIBUTION

WITBANK SOUTH AFRICA + 27 13 656 5135 www.martin-eng.co.za	DRAWN BY: FK DATE: 2014-04-08
	CHK.: LK DATE: -
TITLE MARTIN ENGINEERING WITBANK SOUTH AFRICA 5ROLL HSRC INSTALLATION DRAWING	ENG.: RB DATE: - PM.: DB DATE: -
DRAWING NUMBER HSRC 1050-2100BW	SHEET 1 OF 1 REV: 1 SCALE: NTS